

Solicitors
Regulation
Authority

SQE2 October 2022 Statistical Report

28 February 2023

SQE2 October 2022 Assessment Report

The Solicitors Qualifying Examination (SQE) is a single rigorous assessment for all aspiring solicitors. It consists of two parts: SQE1, which tests candidates' functioning legal knowledge and SQE2, which tests candidates' practical legal skills and knowledge. SQE2 can only be taken if a candidate has passed SQE1 or is exempt from it.

The second round of SQE2 assessments ran between 24 October and 9 November 2022. SQE2 comprises 16 stations¹ — 12 written stations and four oral stations — that assess both skills and application of legal knowledge.

Candidates sat one of three oral sittings covering two consecutive days between 24 October and 1 November and then all candidates sat the same written stations on the same dates (7-9 November). To protect the integrity of the assessments, different oral stations took place on different dates with the sittings identified below.

Station Type	Sitting 1	Sitting 2	Sitting 3
Oral	24-25 October	26-27 October	31 October - 1 November
Written	7-9 November	7-9 November	7-9 November

This report includes statistics that provide feedback on the assessments and their performance.

SQE2 has a single pass mark for the overall 16 station assessment. There may be different pass marks between sittings due to the oral stations being different. There is no pass mark for an individual station or for all of the oral stations or written stations. Find out more about [how the SQE2 is marked](#).

The table below shows the number of candidates, the pass mark, and the pass rate for each sitting, as well as the overall pass rate.

Statistic	Sitting 1	Sitting 2	Sitting 3	Overall
Candidates	272	138	236	646
Pass Mark	62%	62%	62%	-
Pass Rate	69%	71%	72%	71%

¹ Each station is an individual 'assessment' or 'exercise' that candidates take as part of SQE2. Each station is an assessment of a legal skill (one of six) in a practice area (one of five). Advocacy - Dispute Resolution is one station, Legal Drafting - Business organisations, rules and procedures is another station, and so on.

Sitting 1 – Oral (24-25 October) and Written (7-9 November)

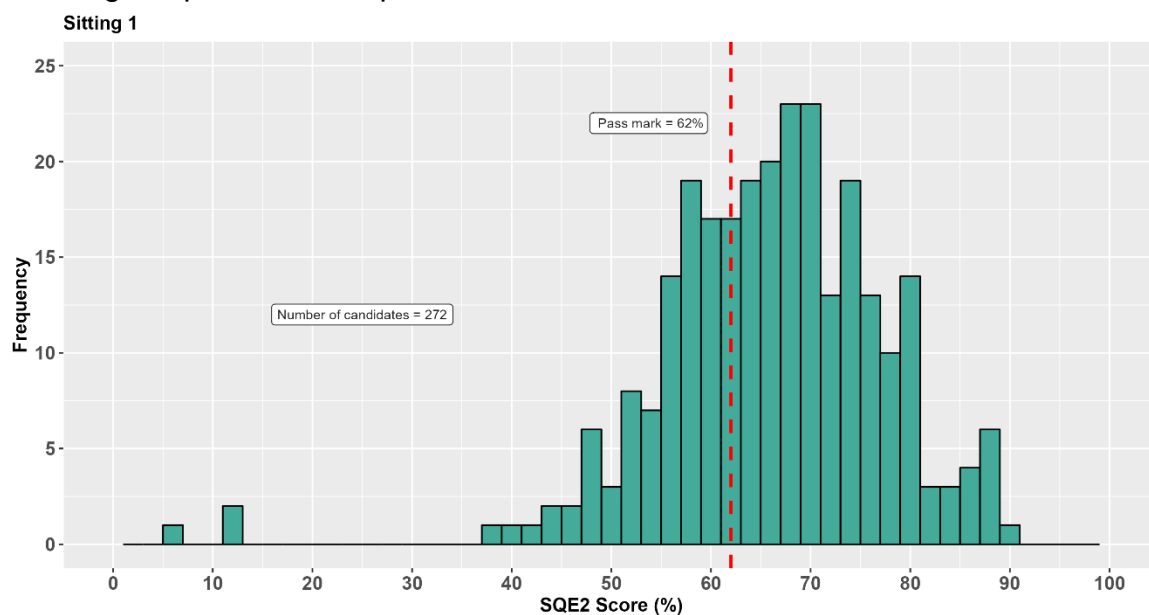
Descriptive Statistics

The following table shows the average (mean) score, the standard deviation, median score, minimum score, maximum score and range of observed scores for SQE2 Sitting 1.

Statistic	Sitting 1
Mean %	66.4
Std. Dev. %	11.5
Median %	67
Min. %	7
Max. %	91
Range %	84

Score Distribution Chart

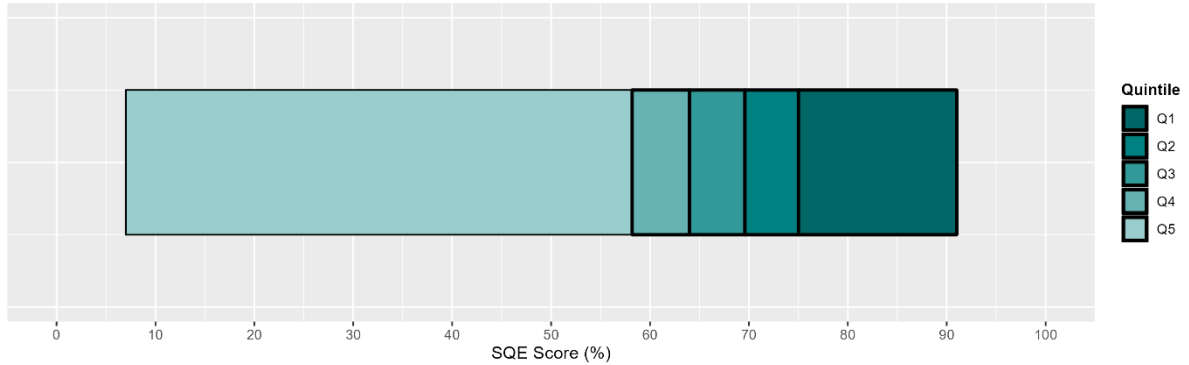
The following chart shows the distribution of scores for Sitting 1, with a red line showing the pass mark required.



Total Score Quintile Chart

This chart shows the **total scores** for Sitting 1 divided into quintiles. Each quintile shows the range of scores achieved by a fifth of the candidates, with Q1 showing the top fifth and Q5 showing the bottom fifth of scores.

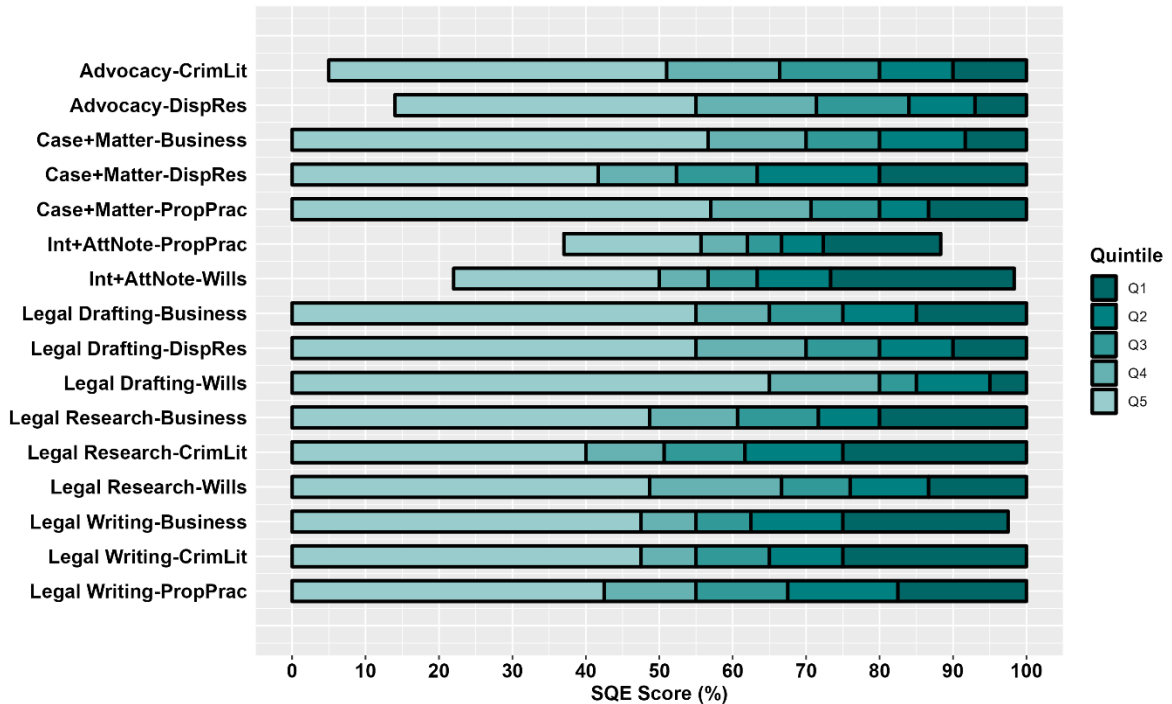
Quintile Score Distribution - Sitting 1



Station Score Quintile Charts

This chart shows the 16 **station scores** for Sitting 1 divided into quintiles. Each quintile shows the range of scores achieved by a fifth of the candidates, with Q1 showing the top fifth and Q5 showing the bottom fifth of scores.

Station Quintile Score Distributions - Sitting 1



Sitting 2 – Oral (26-27 October) and Written (7-9 November)

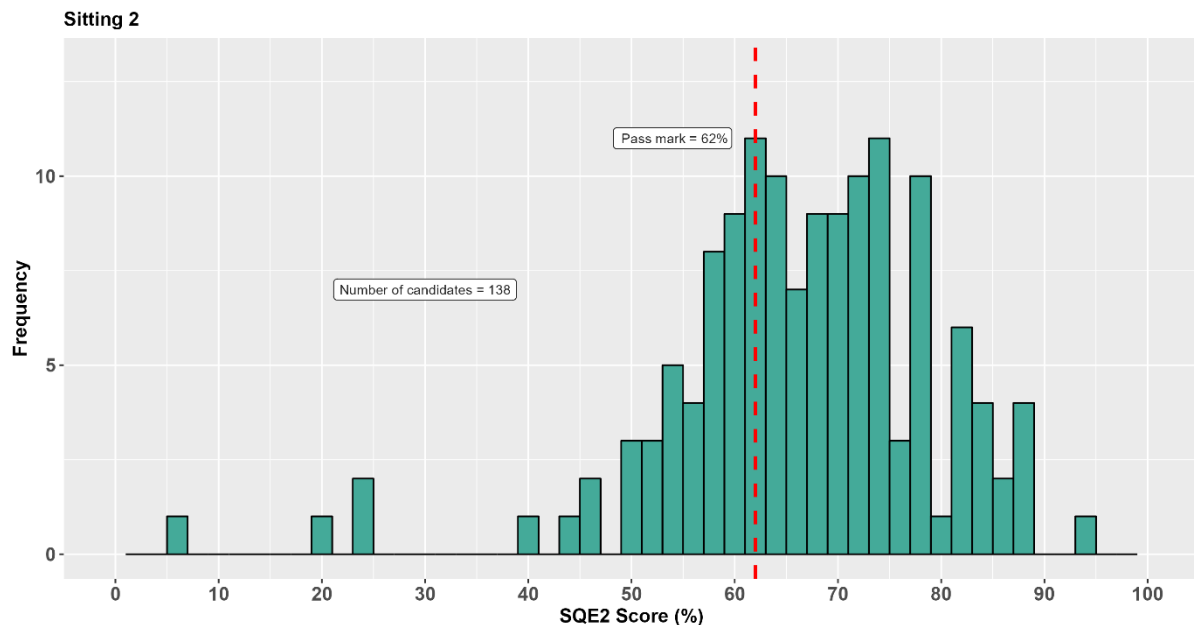
Descriptive Statistics

The following table shows the average (mean) score, the standard deviation, median score, minimum score, maximum score and range of observed scores for SQE2 Sitting 2.

Statistic	Sitting 2
Mean %	66.7
Std. Dev. %	13.3
Median %	68
Min. %	7
Max. %	95
Range %	88

Score Distribution Chart

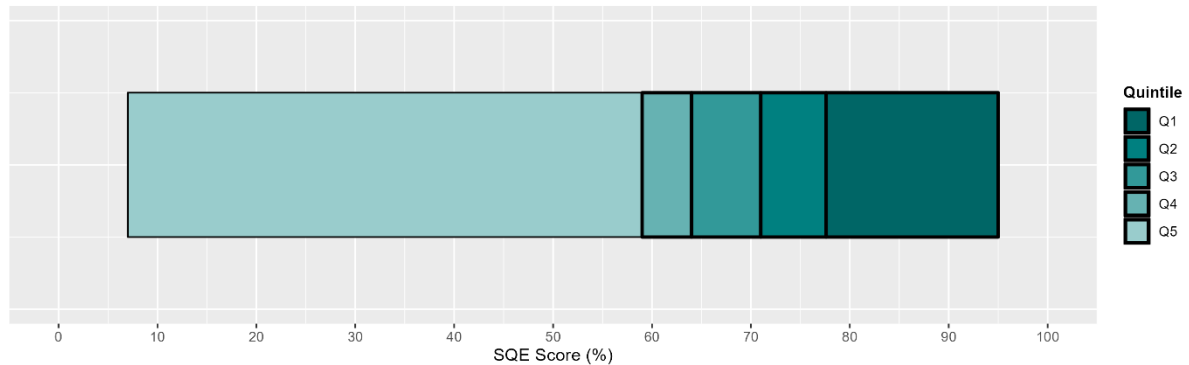
The following chart shows the distribution of scores for Sitting 2, with a red line showing the pass mark required.



Total Score Quintile Chart

This chart shows the **total scores** for Sitting 2 divided into quintiles. Each quintile shows the range of scores achieved by a fifth of the candidates, with Q1 showing the top fifth and Q5 showing the bottom fifth of scores.

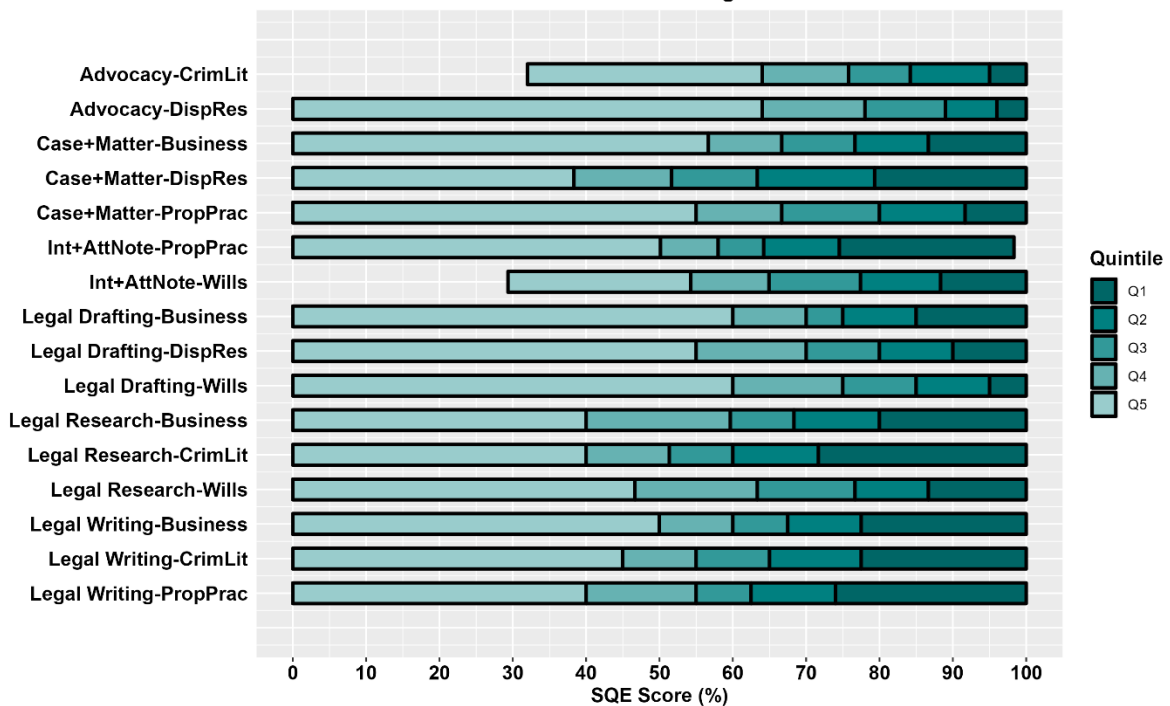
Quintile Score Distribution - Sitting 2



Station Score Quintile Charts

This chart shows the 16 **station scores** for Sitting 2 divided into quintiles. Each quintile shows the range of scores achieved by a fifth of the candidates, with Q1 showing the top fifth and Q5 showing the bottom fifth of scores.

Station Quintile Score Distributions - Sitting 2



Sitting 3 – Oral (31 October - 1 November) and Written (7-9 November)

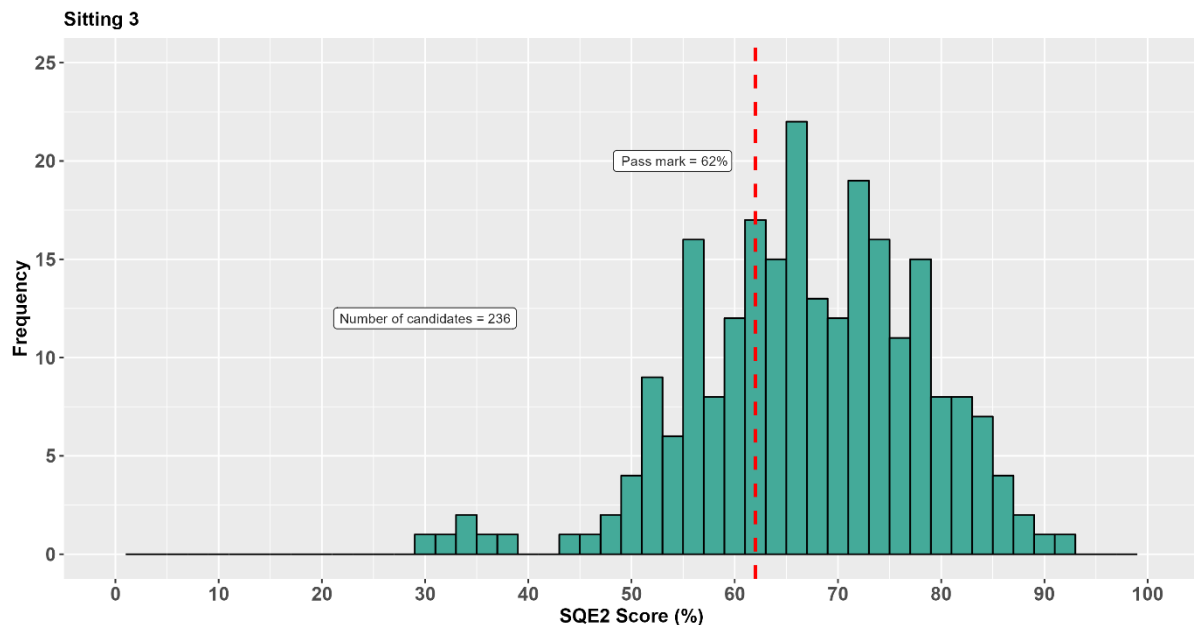
Descriptive Statistics

The following table shows the average (mean) score, the standard deviation, median score, minimum score, maximum score and range of observed scores for SQE2 Sitting 3.

Statistic	Sitting 3
Mean %	67.4
Std. Dev. %	11.1
Median %	67
Min. %	31
Max. %	93
Range %	62

Score Distribution Chart

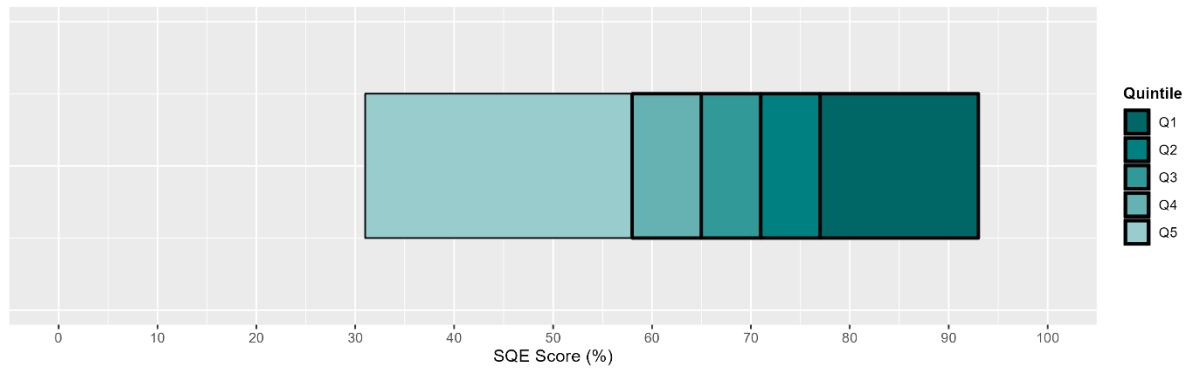
The following chart shows the distribution of scores for Sitting 3, with a red line showing the pass mark required.



Total Score Quintile Chart

This chart shows the **total scores** for Sitting 3 divided into quintiles. Each quintile shows the range of scores achieved by a fifth of the candidates, with Q1 showing the top fifth and Q5 showing the bottom fifth of scores.

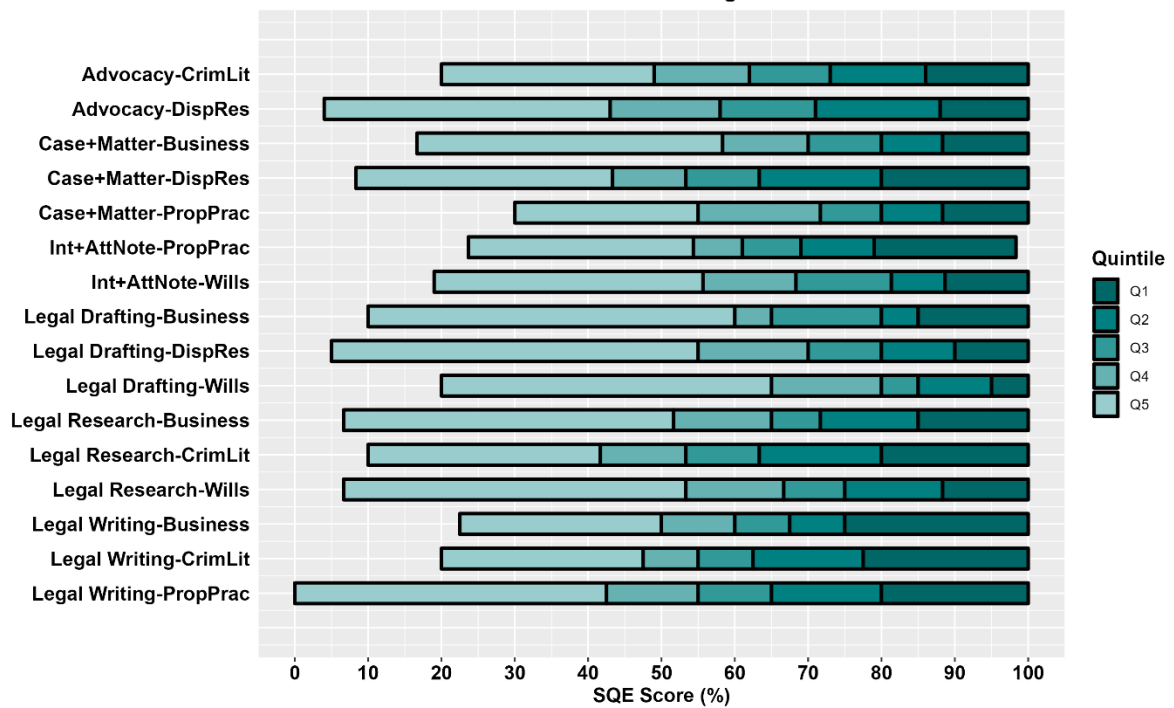
Quintile Score Distribution - Sitting 3



Station Score Quintile Charts

This chart shows the 16 **station scores** for Sitting 3 divided into quintiles. Each quintile shows the range of scores achieved by a fifth of the candidates, with Q1 showing the top fifth and Q5 showing the bottom fifth of scores.

Station Quintile Score Distributions - Sitting 3



Pass Rates

The SRA collects diversity and socio-economic data to help understand how candidates with different characteristics and backgrounds perform in the assessments. The data categories are consistent with data collected by the Office for National Statistics (ONS) and the Social Mobility Commission.

Based on the responses provided in the online diversity survey completed ahead of registering for the assessment, the following is provided in each table:

- Number of candidates in each group (n)
- Proportion of candidates in each group (%)
- Average score within each group (Mean Score %)
- Pass rate for each group (Pass Rate %)

Mean scores and pass rates are not reported for groups with fewer than 10 candidates.

What is your ethnic group?	SQE2			
	Candidates n	%	Mean Score %	Pass Rate %
Asian / Asian British	207	32	66	67
Black / Black British	47	7	62	53
Mixed / multiple ethnic groups	28	4	67	75
Other ethnic group	55	9	66	73
White	247	38	68	74
Prefer not to say	62	10	69	79

Do you consider yourself to have a disability according to the definition in the Equality Act 2010?	SQE2			
	Candidates n	%	Mean Score %	Pass Rate %
Yes	30	5	68	73
No	566	87	67	70
Prefer not to say	50	8	69	82

What is your sex?	SQE2			
	Candidates n	%	Mean Score %	Pass Rate %
Female	384	59	67	73
Male	232	36	66	66
Other	0	0	-	-
Prefer not to say	30	5	70	77

What age category are you in?	SQE2			
	Candidates n	%	Mean Score %	Pass Rate %
16 - 24	27	4	66	78
25 - 34	375	58	69	77
35 - 44	159	25	65	65
45 - 44	54	8	61	48
55 - 64	10	2	54	30
65+	0	0	-	-
Prefer not to say	21	3	67	71

Did either of your parents attend university by the time you were 18?	SQE2			
	Candidates n	%	Mean Score %	Pass Rate %
Yes, one or both of my parents attended university	342	53	68	75
No, neither of my parents attended university	208	32	67	69
Do not know / not sure	14	2	61	50
Prefer not to say	82	13	65	62

Have you undertaken any qualifying work experience?	SQE2			
	Candidates n	%	Mean Score %	Pass Rate %
Yes	369	57	67	72
No	39	6	68	72
Prefer not to say	238	37	66	68

What is your highest level of education?	SQE2			
	Candidates n	%	Mean Score %	Pass Rate %
At least an undergraduate degree	563	87	67	72
Qualifications below degree level	3	1	-	-
Not applicable	35	5	59	49
Prefer not to say	45	7	66	67

What was the your undergraduate degree classification?	SQE2			
	Candidates n	%	Mean Score %	Pass Rate %
1st	83	13	74	90
2:1	227	35	68	77
2:2	84	13	62	55
3rd	6	1	-	-
Commendation	4	1	-	-
Distinction	23	3	70	83
Pass	29	4	64	52
Prefer not to say	50	8	63	64
Not applicable	140	22	65	64

Are you a qualified lawyer?	SQE2			
	Candidates n	%	Mean Score %	Pass Rate %
Yes	347	54	66	68
No	299	46	68	74

Which type of school did you attend for the most time between the ages of 11 and 16?	SQE2			
	Candidates n	%	Mean Score %	Pass Rate %
State-run or state-funded school - non-selective	138	21	67	71
State-run or state-funded school - selective on academic, faith or other grounds	64	10	66	64
Independent or fee-paying school	60	9	69	78
Independent or fee-paying school, where I received a bursary covering 90% or more of my tuition	9	2	-	-
Attended school outside the UK	287	45	67	70
I don't know	2	0	-	-
Other	0	0	-	-
Prefer not to say	86	13	66	71

What was the occupation of your main household earner when you were aged about 14?	SQE2			
	Candidates n	%	Mean Score %	Pass Rate %
Professional background	358	55	67	75
Intermediate background	61	10	67	66
Working class background	59	9	67	69
Other background	20	3	63	55
Prefer not to say	148	23	66	66