

Solicitors
Regulation
Authority

SQE2 April 2023 Statistical Report

22 August 2023

SQE2 April 2023 Assessment Report

The Solicitors Qualifying Examination (SQE) is a single rigorous assessment for all aspiring solicitors. It consists of two parts: SQE1, which tests candidates' functioning legal knowledge and SQE2, which tests candidates' practical legal skills and knowledge. SQE2 can only be taken if a candidate has passed SQE1 or is exempt from it.

The third round of SQE2 assessments ran between 25 April and 11 May 2023. SQE2 comprises 16 stations¹ — 12 written stations and four oral stations — that assess both skills and application of legal knowledge.

Candidates sat one of four oral sittings covering two consecutive days between 25 April and 5 May and then all candidates sat the same written stations on the same dates (9-11 May). To protect the integrity of the assessments, different oral stations took place on different dates with the sittings identified below.

Station Type	Sitting 1	Sitting 2	Sitting 3	Sitting 4
Oral	25-26 April	27-28 April	2-3 May	4-5 May
Written	9-11 May	9-11 May	9-11 May	9-11 May

This report includes statistics that provide feedback on the assessments and their performance.

SQE2 has a single pass mark for the overall 16 station assessment. There may be different pass marks between sittings due to the oral stations being different. There is no pass mark for an individual station or for all of the oral stations or written stations. Find out more about [how the SQE2 is marked](#).

The table below shows the number of candidates, the pass mark, and the pass rate for each sitting, as well as the overall pass rate.

Statistic	Sitting 1	Sitting 2	Sitting 3	Sitting 4	Overall
Pass Mark	62%	62%	61%	61%	-
Candidates (all graded)	155	289	286	266	996
Pass Rate (all graded)	68%	78%	78%	79%	77%
Candidates (first attempt)	143	266	263	251	923
Pass Rate (first attempt)	71%	82%	83%	81%	80%

¹ Each station is an individual 'assessment' or 'exercise' that candidates take as part of SQE2. Each station is an assessment of a legal skill (one of six) in a practice area (one of five). Advocacy - Dispute Resolution is one station, Legal Drafting - Business organisations, rules and procedures is another station, and so on.

Sitting 1 – Oral (25-26 April) and Written (9-11 May)

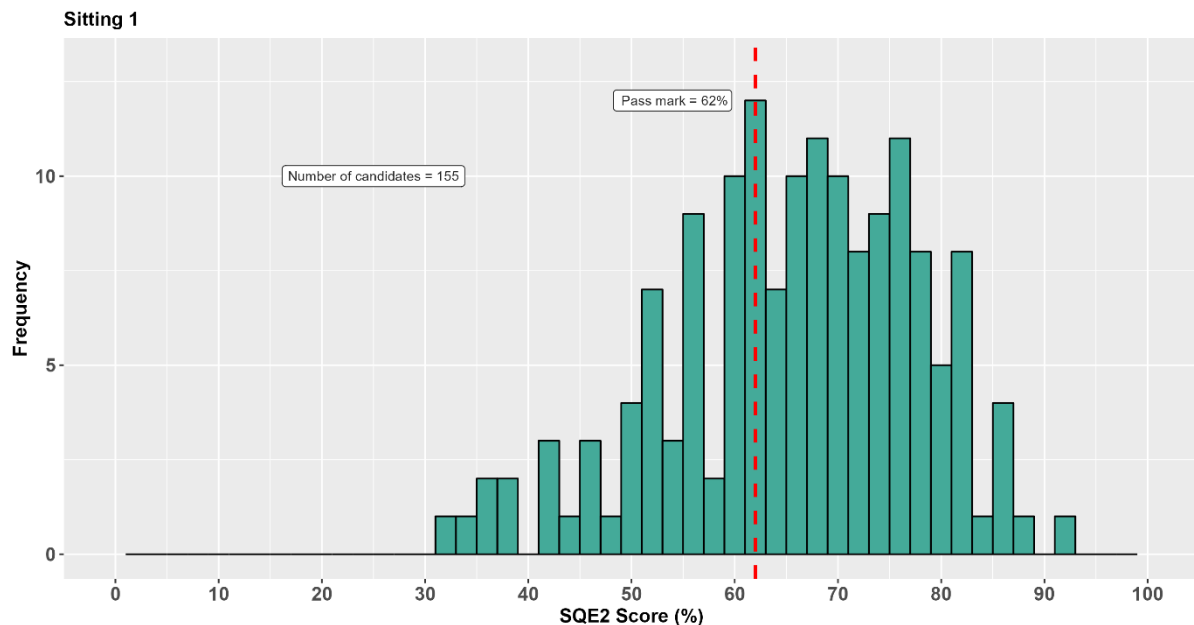
Descriptive Statistics

The following table shows the average (mean) score, the standard deviation, median score, minimum score, maximum score and range of observed scores for SQE2 Sitting 1.

Statistic	Sitting 1
Mean %	66.2
Std. Dev. %	12.3
Median %	67
Min. %	32
Max. %	92
Range %	60

Score Distribution Chart

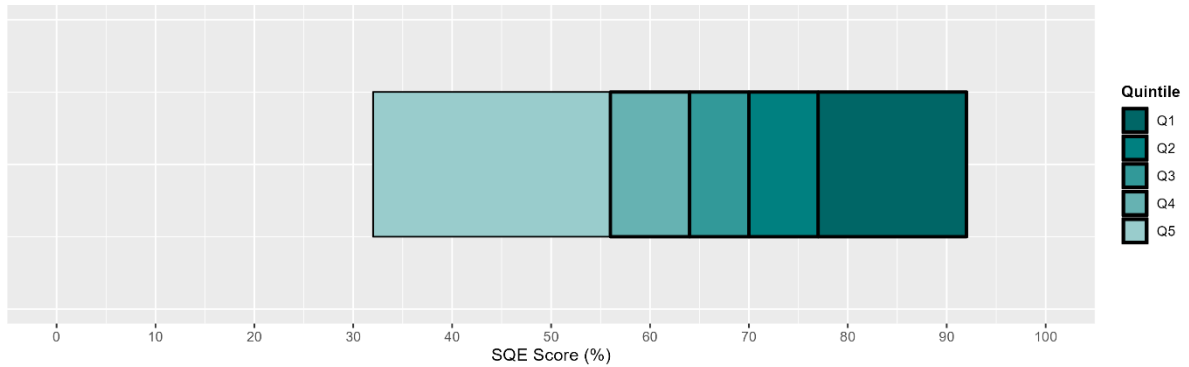
The following chart shows the distribution of scores for Sitting 1, with a red line showing the pass mark required.



Total Score Quintile Chart

This chart shows the **total scores** for Sitting 1 divided into quintiles. Each quintile shows the range of scores achieved by a fifth of the candidates, with Q1 showing the top fifth and Q5 showing the bottom fifth of scores.

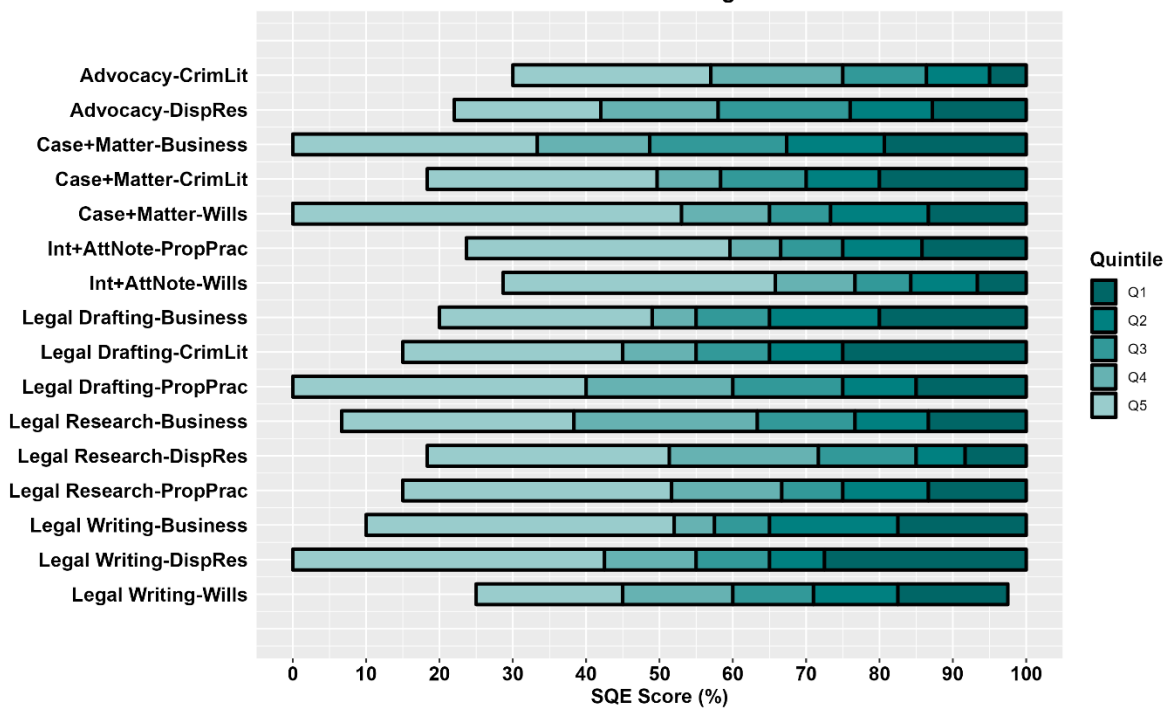
Quintile Score Distribution - Sitting 1



Station Score Quintile Charts

This chart shows the 16 **station scores** for Sitting 1 divided into quintiles. Each quintile shows the range of scores achieved by a fifth of the candidates, with Q1 showing the top fifth and Q5 showing the bottom fifth of scores.

Station Quintile Score Distributions - Sitting 1



Sitting 2 – Oral (27-28 April) and Written (9-11 May)

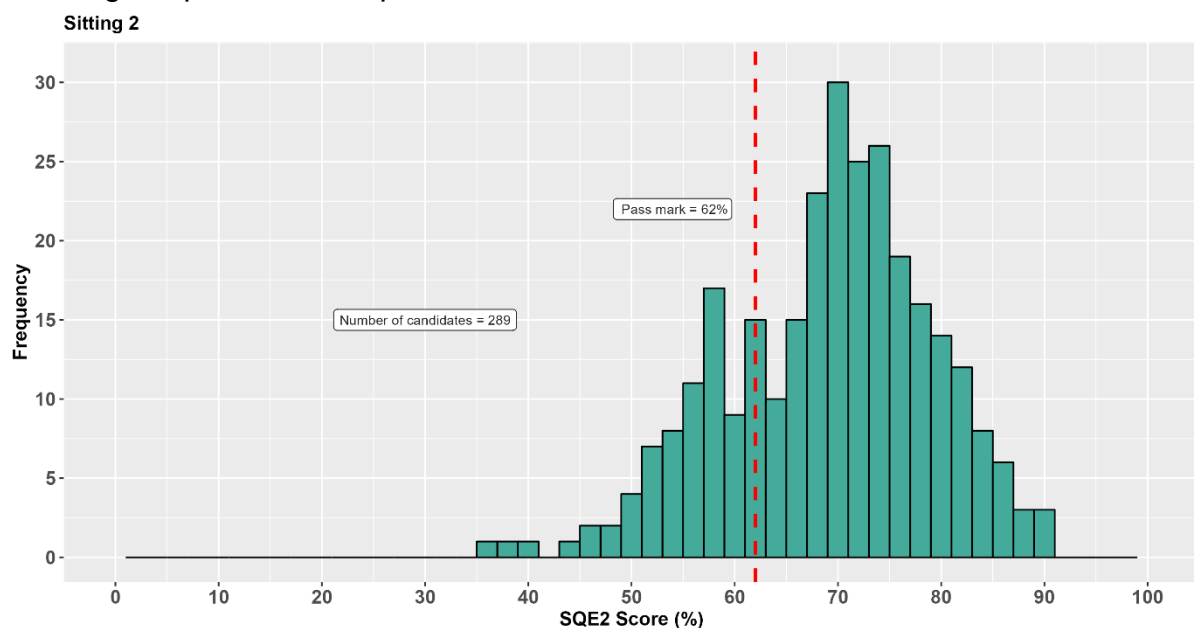
Descriptive Statistics

The following table shows the average (mean) score, the standard deviation, median score, minimum score, maximum score and range of observed scores for SQE2 Sitting 2.

Statistic	Sitting 2
Mean %	69.6
Std. Dev. %	10.1
Median %	71
Min. %	36
Max. %	91
Range %	55

Score Distribution Chart

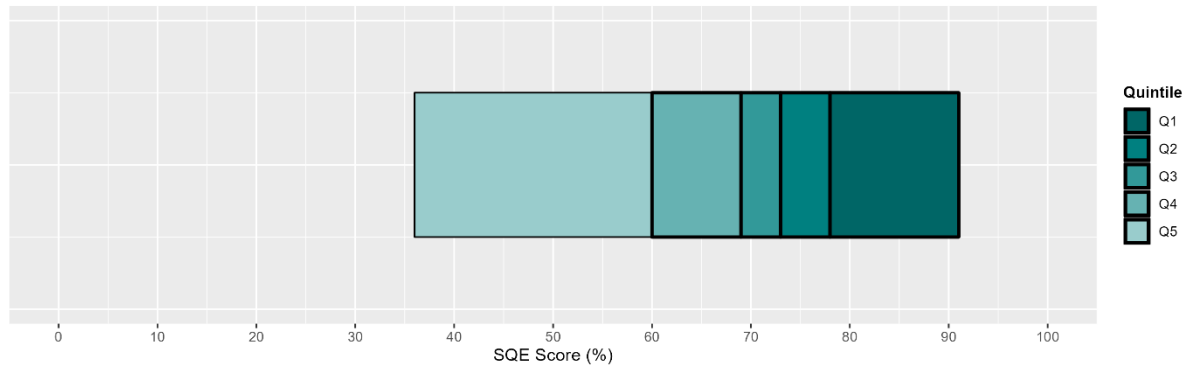
The following chart shows the distribution of scores for Sitting 2, with a red line showing the pass mark required.



Total Score Quintile Chart

This chart shows the **total scores** for Sitting 2 divided into quintiles. Each quintile shows the range of scores achieved by a fifth of the candidates, with Q1 showing the top fifth and Q5 showing the bottom fifth of scores.

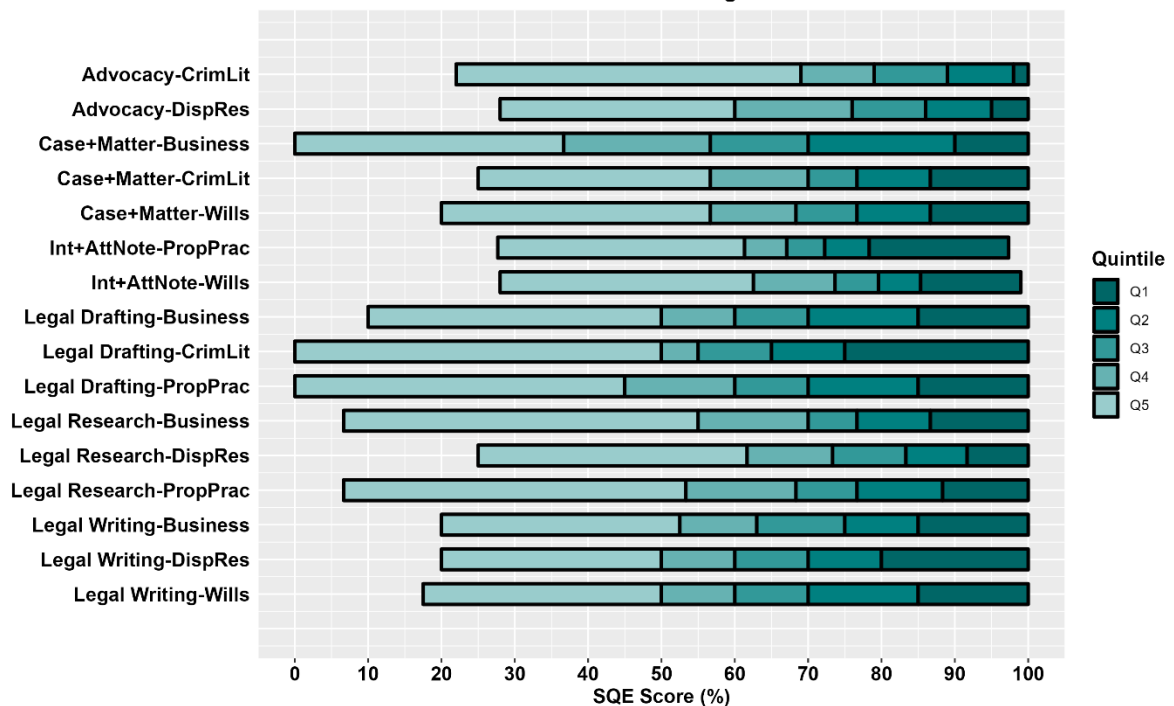
Quintile Score Distribution - Sitting 2



Station Score Quintile Charts

This chart shows the 16 **station scores** for Sitting 2 divided into quintiles. Each quintile shows the range of scores achieved by a fifth of the candidates, with Q1 showing the top fifth and Q5 showing the bottom fifth of scores.

Station Quintile Score Distributions - Sitting 2



Sitting 3 – Oral (2-3 May) and Written (9-11 May)

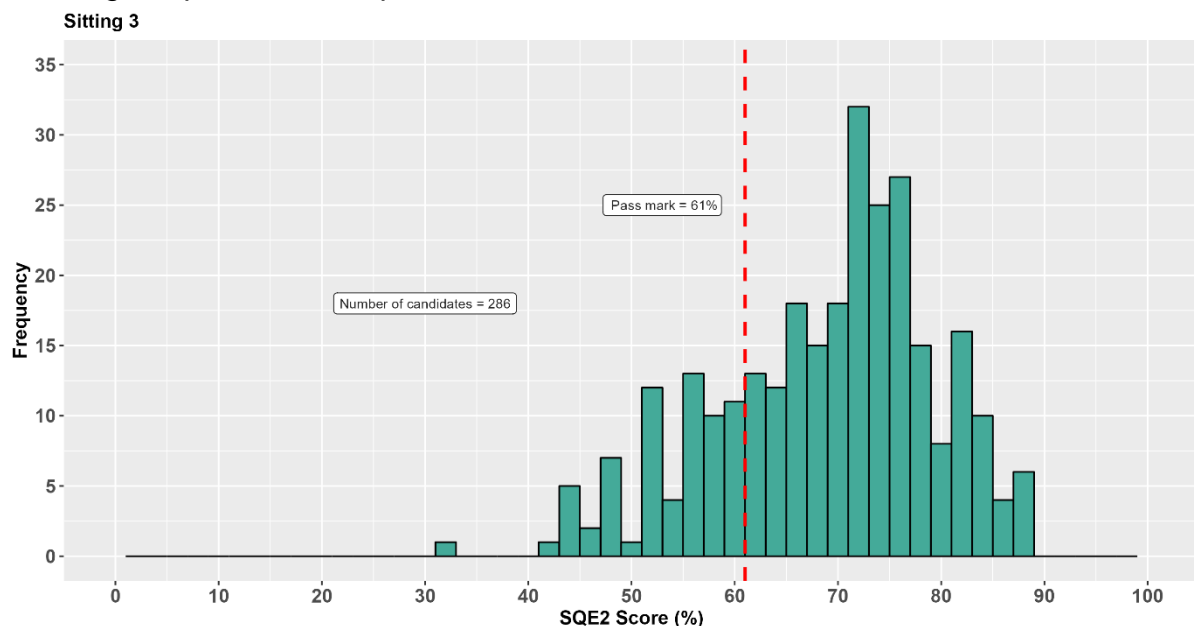
Descriptive Statistics

The following table shows the average (mean) score, the standard deviation, median score, minimum score, maximum score and range of observed scores for SQE2 Sitting 3.

Statistic	Sitting 3
Mean %	69.2
Std. Dev. %	10.7
Median %	71.5
Min. %	32
Max. %	89
Range %	57

Score Distribution Chart

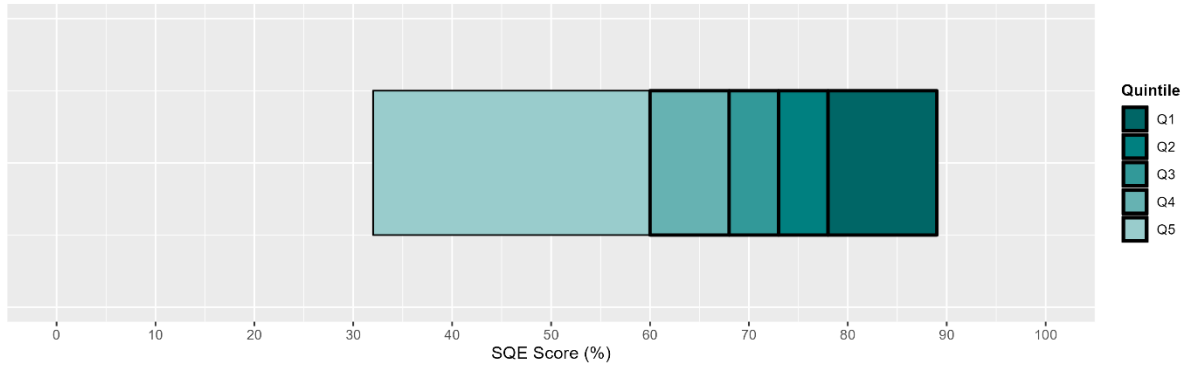
The following chart shows the distribution of scores for Sitting 3, with a red line showing the pass mark required.



Total Score Quintile Chart

This chart shows the **total scores** for Sitting 3 divided into quintiles. Each quintile shows the range of scores achieved by a fifth of the candidates, with Q1 showing the top fifth and Q5 showing the bottom fifth of scores.

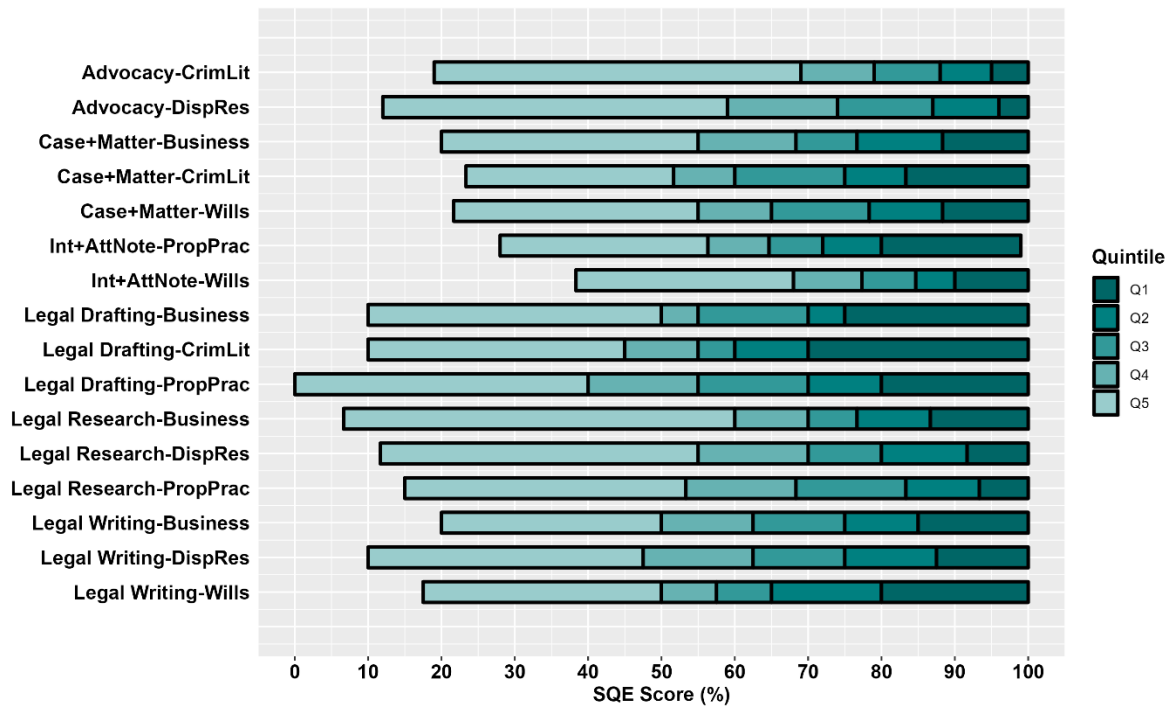
Quintile Score Distribution - Sitting 3



Station Score Quintile Charts

This chart shows the 16 **station scores** for Sitting 3 divided into quintiles. Each quintile shows the range of scores achieved by a fifth of the candidates, with Q1 showing the top fifth and Q5 showing the bottom fifth of scores.

Station Quintile Score Distributions - Sitting 3



Sitting 4 – Oral (4-5 May) and Written (9-11 May)

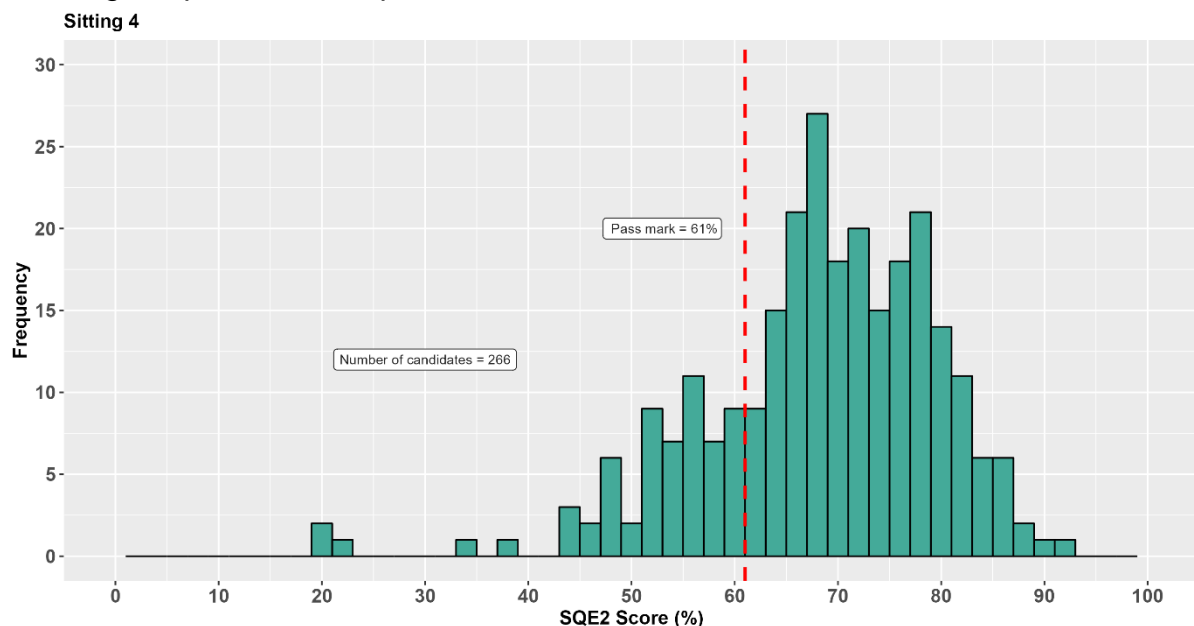
Descriptive Statistics

The following table shows the average (mean) score, the standard deviation, median score, minimum score, maximum score and range of observed scores for SQE2 Sitting 4.

Statistic	Sitting 4
Mean %	68.6
Std. Dev. %	11.6
Median %	69.5
Min. %	20
Max. %	93
Range %	73

Score Distribution Chart

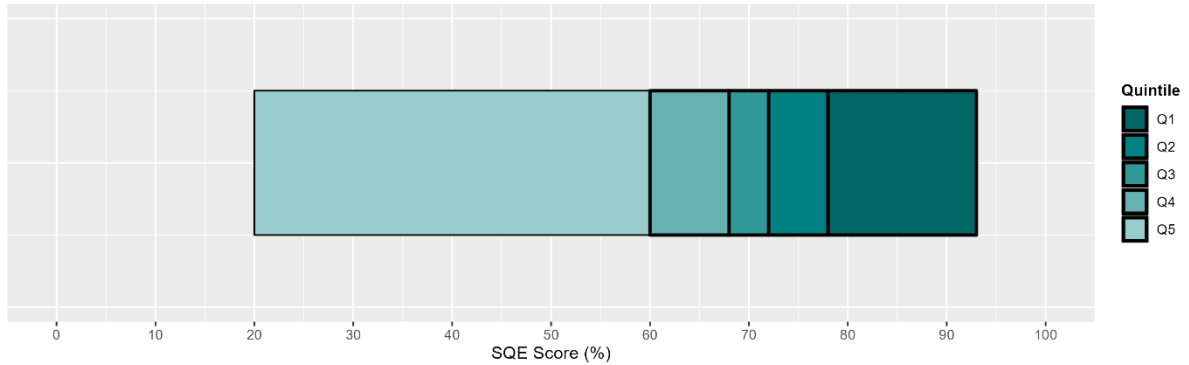
The following chart shows the distribution of scores for Sitting 4, with a red line showing the pass mark required.



Total Score Quintile Chart

This chart shows the **total scores** for Sitting 4 divided into quintiles. Each quintile shows the range of scores achieved by a fifth of the candidates, with Q1 showing the top fifth and Q5 showing the bottom fifth of scores.

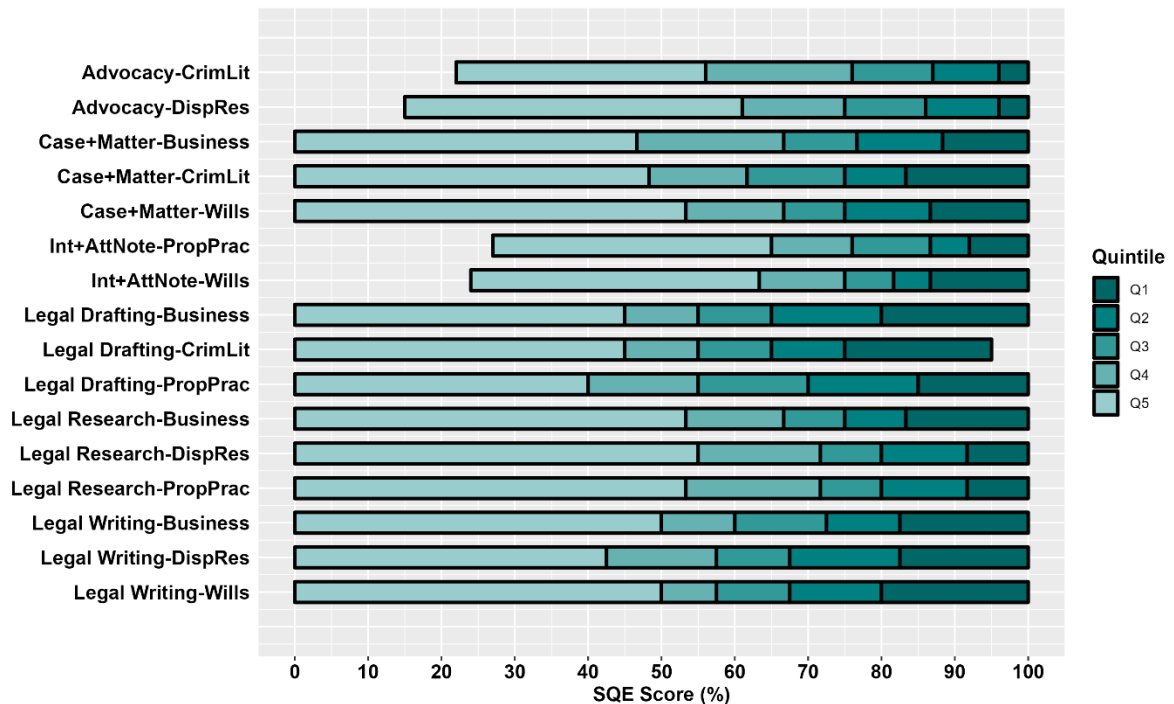
Quintile Score Distribution - Sitting 4



Station Score Quintile Charts

This chart shows the 16 **station scores** for Sitting 4 divided into quintiles. Each quintile shows the range of scores achieved by a fifth of the candidates, with Q1 showing the top fifth and Q5 showing the bottom fifth of scores.

Station Quintile Score Distributions - Sitting 4



Pass Rates

The SRA collects diversity and socio-economic data to help understand how candidates with different characteristics and backgrounds perform in the assessments. The data categories are consistent with data collected by the Office for National Statistics (ONS) and the Social Mobility Commission.

Based on the responses provided in the online diversity survey completed ahead of registering for the assessment, the following is provided in each table:

- Proportion of candidates in each group (Candidates %)
- Average score within each group (Mean Score %)
- Pass rate for each group (Pass Rate %)

The tables provide data for candidates taking SQE2 as a first attempt. Data is not reported for groups with fewer than 10 candidates. Performance data from all candidates, including resitting candidates, will be presented in the SQE Annual Report.

What is your ethnic group?	Candidates %	Mean Score %	Pass Rate %
Asian / Asian British	21	66	71
Black / Black British	4	62	52
Mixed / multiple ethnic groups	5	70	84
Other ethnic group	7	64	55
White	57	72	90
Prefer not to say	6	67	72

Do you consider yourself to have a disability according to the definition in the Equality Act 2010?	Candidates %	Mean Score %	Pass Rate %
Yes	6	70	82
No	89	70	81
Prefer not to say	5	67	73

What is your sex?	Candidates %	Mean Score %	Pass Rate %
Female	66	70	82
Male	32	69	78
Other	-	-	-
Prefer not to say	2	69	69

Which is your religion or belief?	Candidates %	Mean Score %	Pass Rate %
Buddhist	2	64	70
Christian	29	68	80
Hindu	4	67	66
Jewish	-	-	-
Muslim	9	63	55
Sikh	1	61	60
No religion or belief	41	73	90
Other	-	-	-
Prefer not to say	14	69	77

What age category are you in?	Candidates %	Mean Score %	Pass Rate %
16 - 24	16	74	93
25 - 34	62	70	82
35 - 44	18	65	66
45 - 44	3	64	61
55 - 64	-	-	-
65+	-	-	-
Prefer not to say	1	70	82

Did either of your parents attend university by the time you were 18?	Candidates %	Mean Score %	Pass Rate %
Yes, one or both of my parents attended university	54	70	82
No, neither of my parents attended university	37	70	83
Do not know / not sure	2	62	46
Prefer not to say	7	65	66

Have you undertaken any qualifying work experience?	Candidates %	Mean Score %	Pass Rate %
Yes	66	70	81
No	13	71	83
Prefer not to say	21	68	77

What is your highest level of education?	Candidates %	Mean Score %	Pass Rate %
At least an undergraduate degree	91	70	82
Qualifications below degree level	2	78	100
No formal qualifications	-	-	-
Not applicable	2	63	62
Prefer not to say	5	65	58

What was the your undergraduate degree classification?	Candidates %	Mean Score %	Pass Rate %
1st	20	75	95
2:1	44	70	83
2:2	11	62	63
3rd	-	-	-
Commendation	-	-	-
Distinction	2	68	83
Pass	2	60	44
Prefer not to say	4	66	70
Not applicable	17	67	71

Are you a qualified lawyer?	Candidates %	Mean Score %	Pass Rate %
Yes	27	65	69
No	73	71	85

Which type of school did you attend for the most time between the ages of 11 and 16?	Candidates %	Mean Score %	Pass Rate %
State-run or state-funded school - non-selective	30	72	86
State-run or state-funded school - selective on academic, faith or other grounds	13	70	87
Independent or fee-paying school	13	71	84
Independent or fee-paying school, where I received a bursary covering 90% or more of my tuition	1	74	92
Attended school outside the UK	36	67	73
I don't know	-	-	-
Other	-	-	-
Prefer not to say	7	68	73

What was the occupation of your main household earner when you were aged about 14?	Candidates %	Mean Score %	Pass Rate %
Professional background	57	71	84
Intermediate background	11	68	76
Working class background	15	70	81
Other background	4	67	69
Prefer not to say	13	67	70